

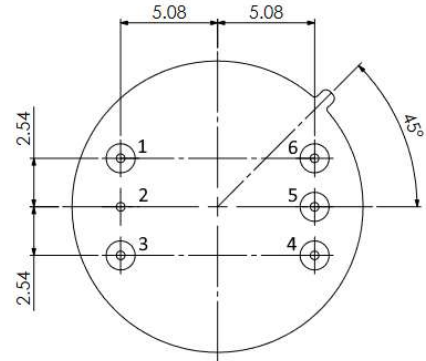
## HTPA160x120d

Infrared Thermopile Array Sensors for Remote Temperature Measurement and Imaging Applications

The 160x120d sits on top of our range of infrared array sensors. With 19.200 pixels, the resolution enables the detection of even finer details. All while fitting in the same TO8 housing.

Due to the digital SPI interface, only 6 pins are needed. It has a built-in Flash to store all calibration data and a 16-bit ADC. The speed can be set internally via the sensor clock and ADC-resolution between 9 Hz (highest resolution) and 16 Hz (lower resolution).

### Dimensions - Bottom View



### Available Optics



Optic	L3.95	L10
FoV [°]	123 x 84	38 x 30
Length of cap [mm]	20.4	25.4
Diameter of cap [mm]	20	23
F-number	0.8	0.72

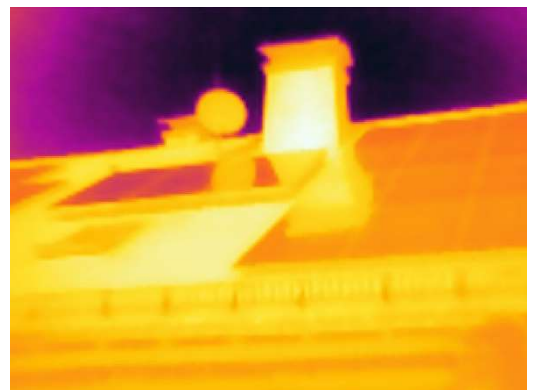
### Characteristics

Parameter	Value	Tolerance	Unit
Supply voltage (DC)	3.3	+0.3/-0.0	V
Current consumption	45	±2.0	mA
Clock frequency (Sensor)	10	±5	MHz
Ambient temperature range	-20 to 85		°C
Object temperature range	-20 to >500...1000		°C**
Framerate (full frame)	2 to 16		Hz
Framerate (12th part of array)	12 to 150		Hz
NETD (best optics)	50...200		mK@1Hz*

\* NETD for required framerate:  $NETD@1Hz \times \sqrt{Framerate}$   
 \*\* Depending on optics

### Pin Configuration (SPI)

Pin	Function
1	EE_Enable
2	VSS
3	VDD
4	SCLK
5	MOSI
6	MISO



Roof with solar panels